

*Product Manuals*



Anping Yadong Hardware Products Co., LTD



**Address:** Taicheng Industry Area, Anping, Hebei, China

**Telephone:** 86-15233283450

**Fax:** 86-3187994501

**Web:** [www.anpingyadong.com](http://www.anpingyadong.com)

**Email:** [tina@yadongmesh.com](mailto:tina@yadongmesh.com)

## Company Profile

Anping Yadong Hardware Products Co., LTD. is located in Anpingxian TaiCheng industrial park, our company specializes in providing building materials primarily wire mesh, copper mesh, welded wire mesh, steel grating, barbed wire, fiberglass mesh and other such materials.

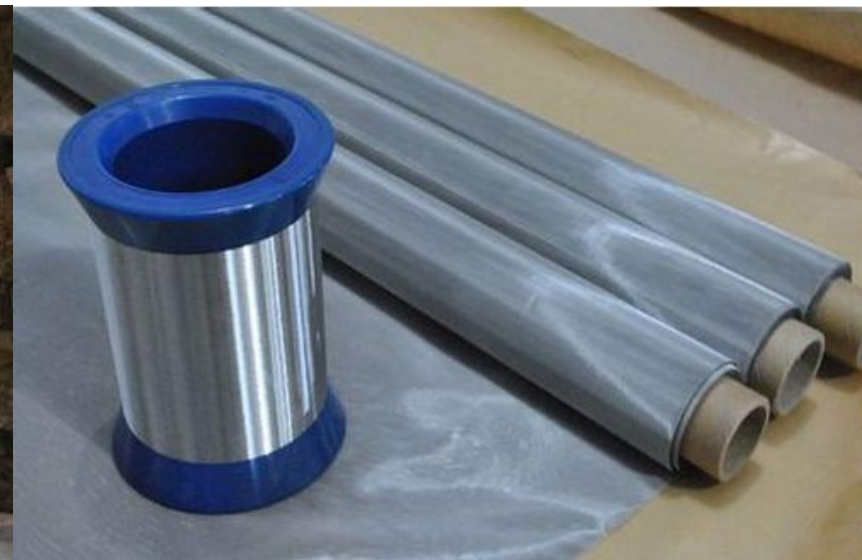
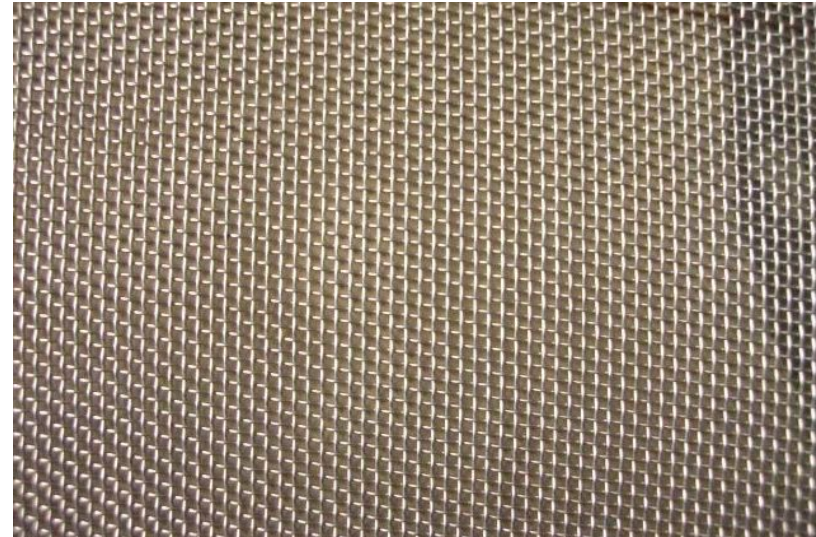
We believe in achieving customer satisfaction by providing high quality and value. Our company is awarded "Quality Management Standard Unit" by the national agriculture ministry. We strictly inspect the quality and develop actively new products which adapt to the market. We have a experienced technical team which is dedicated to providing products with excellent quality and standards.,

## product summary

- 1、Stainless steel wire mesh
- 2、Copper wire mesh
- 3、Welded wire mesh
- 4、Welded wire mesh panel
- 5、Steel grating
- 6、Barbed wire
- 7、Fiberglass mesh
- 8、Chain link fence
- 9、Punching hole mesh

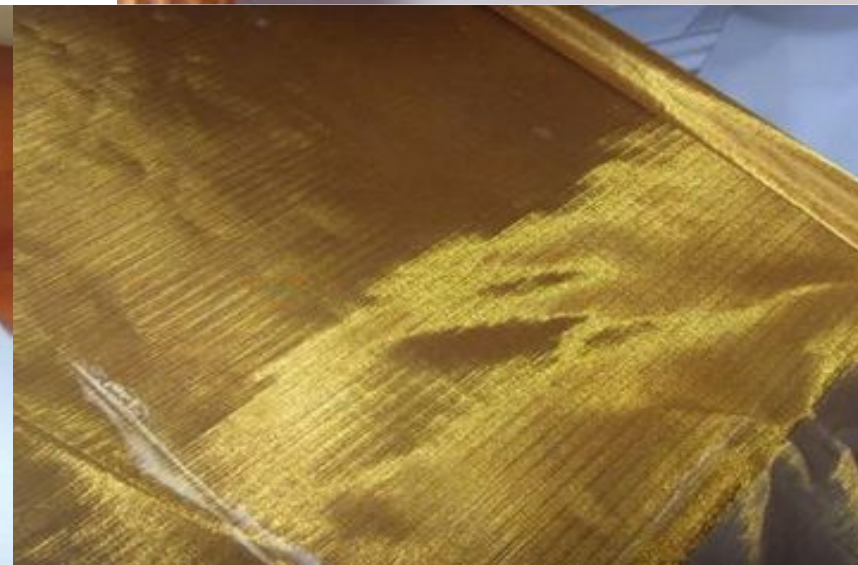
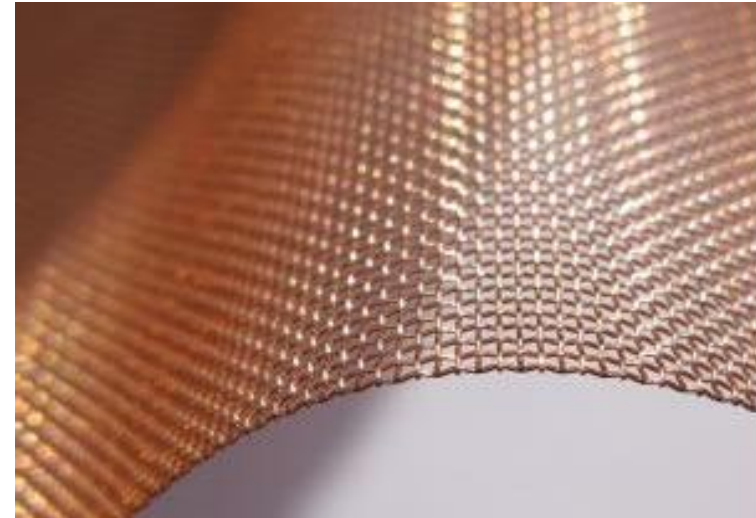
### ***stainless steel wire mesh***

- ❖ Stainless steel wire mesh product introduction:
- ❖ Weaving: plain weave, twill weave.
- ❖ Material: SS302,201,304,304L, 316,316L,310s,etc.
- ❖ Stainless steel screen mesh characteristics:  
Good acid-proof, alkali resistance, corrosion resistance,  
High strength, strong toughness and wear resistance, durable  
Good resistance to high temperature oxidation



### ***brass/copper wire mesh***

- ❖ Material: brass wire, copper wire, phosphorus copper wire
- ❖ Features:
  - ❖ no magnetic, good electrical conductivity, can block the signal and prevent the interference from outside, good ductility, wear resistance, fast heat transfer, good sound insulation, filtration electron beam
- ❖ Usage: sound insulation of wall, electronic display screen, TV, radio communications, preventing electromagnetic interference engineering



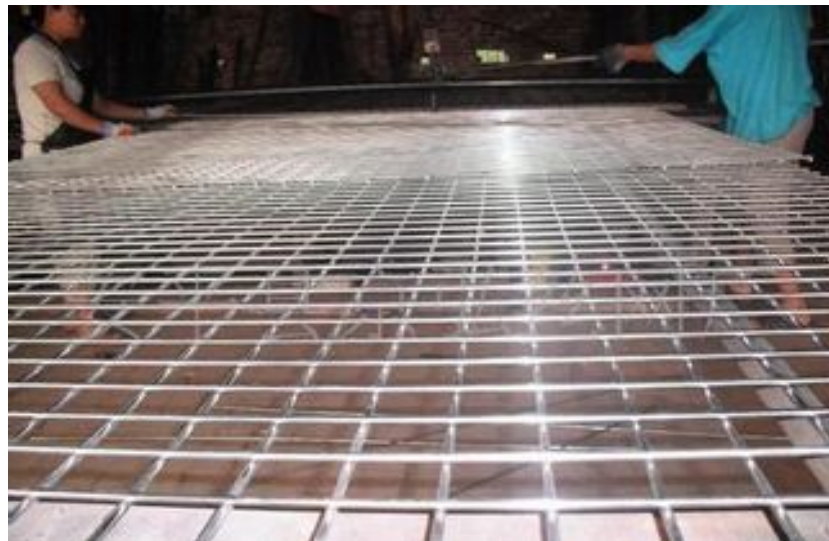
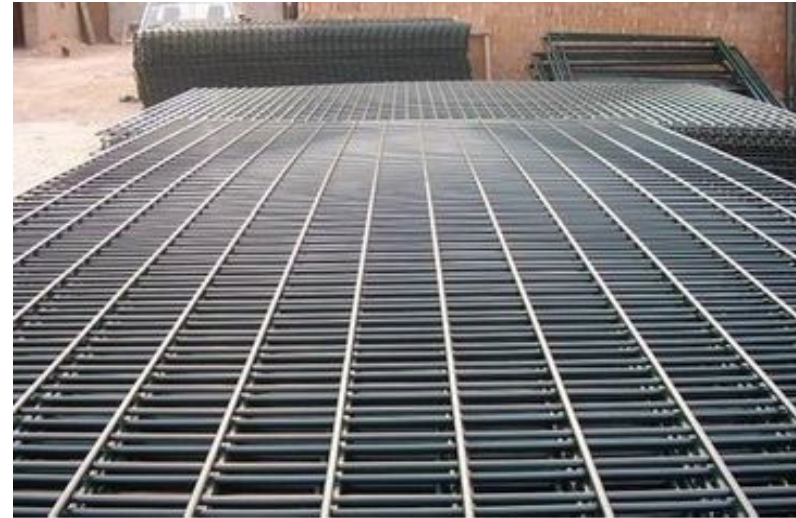
### **welded wire mesh**

- ❖ Welded wire mesh is made by high quality low carbon steel wire which is welded together, then cold (electric galvanized), hot dip galvanized, and then PVC plastic coated etc surface treat. To achieve the smooth surface, uniform mesh, firm solder joint, good machining performance, stability, anti-corrosion, good corrosion.
- ❖ Welded wire mesh is widely used in industry, agriculture, construction, transportation, mining and other industries
- ❖ Welded wire mesh is also used on the building external wall and it can play an important role in the exterior wall thermal insulation system.



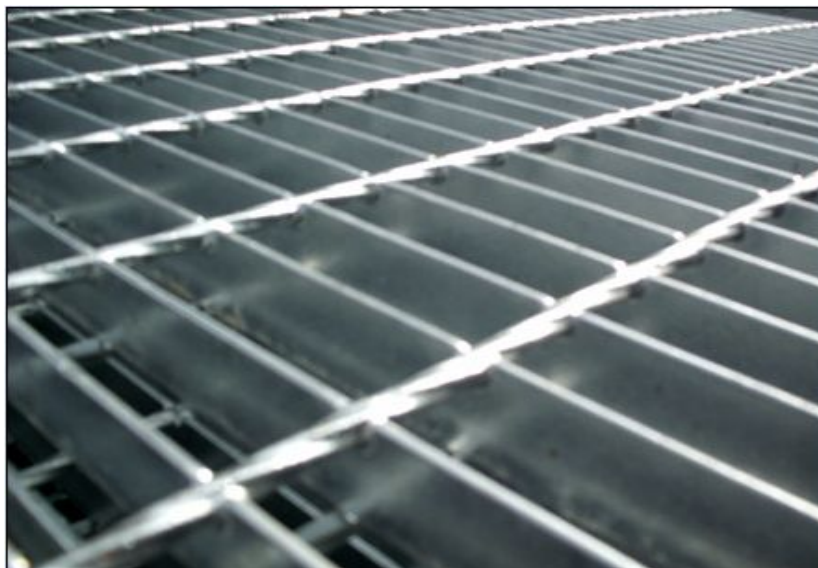
### **welded wire mesh panel**

- ❖ *The advantages of the welded wire mesh panel are : According to utility, it can be divide : decorative mesh, steel wire mesh, fence mesh, architectural mesh, etc ! Based on its colorful character by surface treatment, it is widely used in exhibitions, rack, etc*



## ***steel grating***

- ❖ Steel grating is widely used in building materials, power stations, chemical and general industrial buildings and other industries, which has the advantages such as good ventilation and light perities, prevent slippery, strong bearing capacity, beautifull and durable, easy to clean, easy installation etc .
- ❖ Now steel grating has been widely used in all walks of life both of home and abroad, it mainly used as industrial platform, staircase pedal, drain cover, manhole covers etc.



### ***barbed wire***

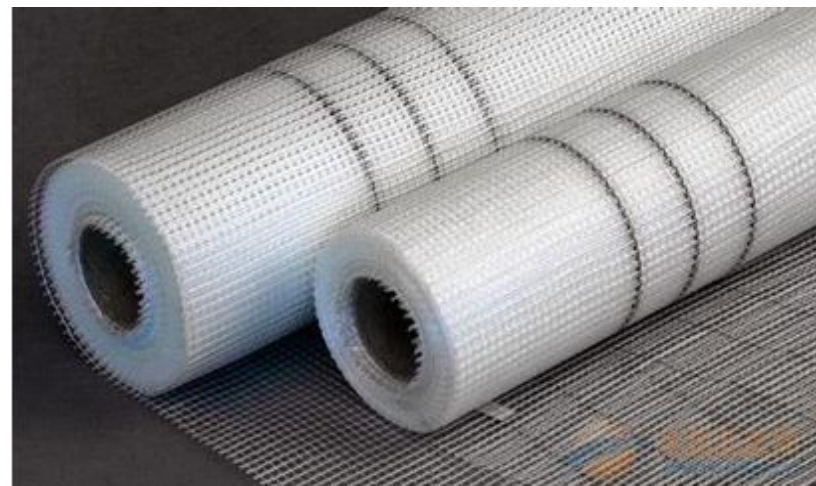
- ❖ Barbed wire is made by full automatic special barbed wire machine. It can be divide into single screw and double twist.
- ❖ Raw material: high quality low carbon steel wire. Surface treatment: electric galvanized, hot dip galvanized, PVC coated , PVC spraying.
- ❖ Usage: used for pasture boundary, railway, highway isolation protection, factory, private willas, banks, prisons, government buildings and other national security facilities.





### **Fiberglass meshes**

The fiberglass mesh is made by c-glass or e-glass fiber yarm, then coated with glue in high temperature, which has the characters of light, high-strength,heat resistance, alkali resistance, waterproof, corrosion resistance,crack resistance,dimension stability etc. It can effectively avoid the cracking caused by surface tension shrinkage and external force. The light and thin fiberglass mesh is often used in metope renovation and interior wall insulation



### **Chain Link Fence**

- ❖ Chain Link Fence is made by high quality low carbon steel wire, stainless steel wire, aluminum wire hook, its weaving is concise, good resistance to corrosion, long service life, strong practicability.
- ❖ Usage: used in the safety protection of stadium, greening around the block, rivers, buildings, residential area etc.



## ***Punching hole mesh***

- ❖ Material: stainless steel, low carbon steel sheet, GI iron sheet.
- ❖ punching hole mesh can be used as the environmental noise barrier which is crossed in the highway, railway, subway and other municipal traffic facilities.
- ❖ Punching hole mesh also can be used in the structure of the sound-absorbing ceiling, wall panel.

